

**INSTALLATION**

**of**

**Oracle Enterprise Linux 7.2.0.0.0  
(OEL 72)**

**in Virtual Box  
(VBox)**

## Table of contents

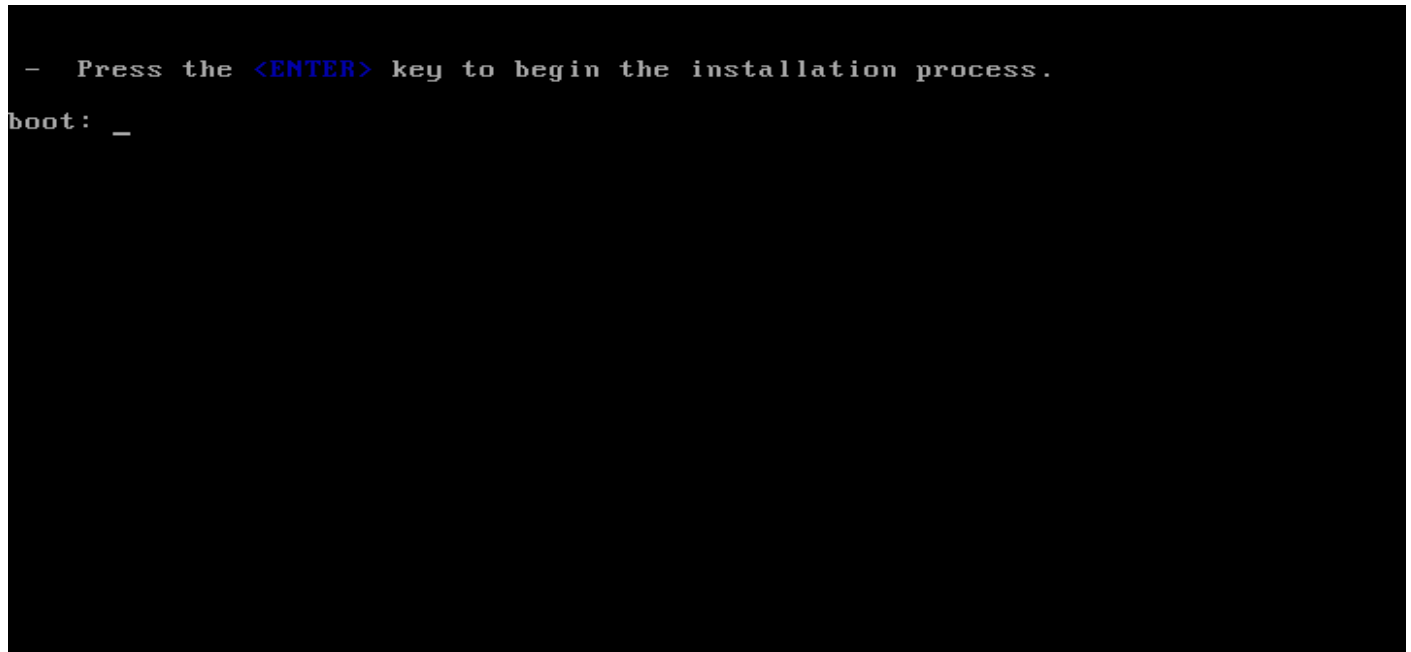
<b>1</b>	<b>Starting Installation .....</b>	<b>3</b>
1.1	Booting from CD	3
1.2	Type I to start the Installation ...	4
1.2.1	Choose the language	4
1.3	Main Menu	5
1.3.1	Keyboard	6
1.3.2	Date & Time	7
1.3.3	Software Selection	8
1.3.4	Network & Hostname	10
1.3.5	Installation Destination	13
1.3.6	During Installation	15
1.3.7	Reboot when installation is finished	16
1.3.8	Accept the Licence	17
1.3.9	First Login Approvals	18

# 1 Starting Installation

Describe at the end in „01-SETUP-a-new-VM.pdf“ you can find some more details about the installation and configuration of OEL (Oracle Enterprise Linux 7.2.0.0.0) in the document.

## 1.1 Booting from CD

As the virtual CD has a bootable image of Linux and the virtual hard disk is empty, the system booted from the CD ...



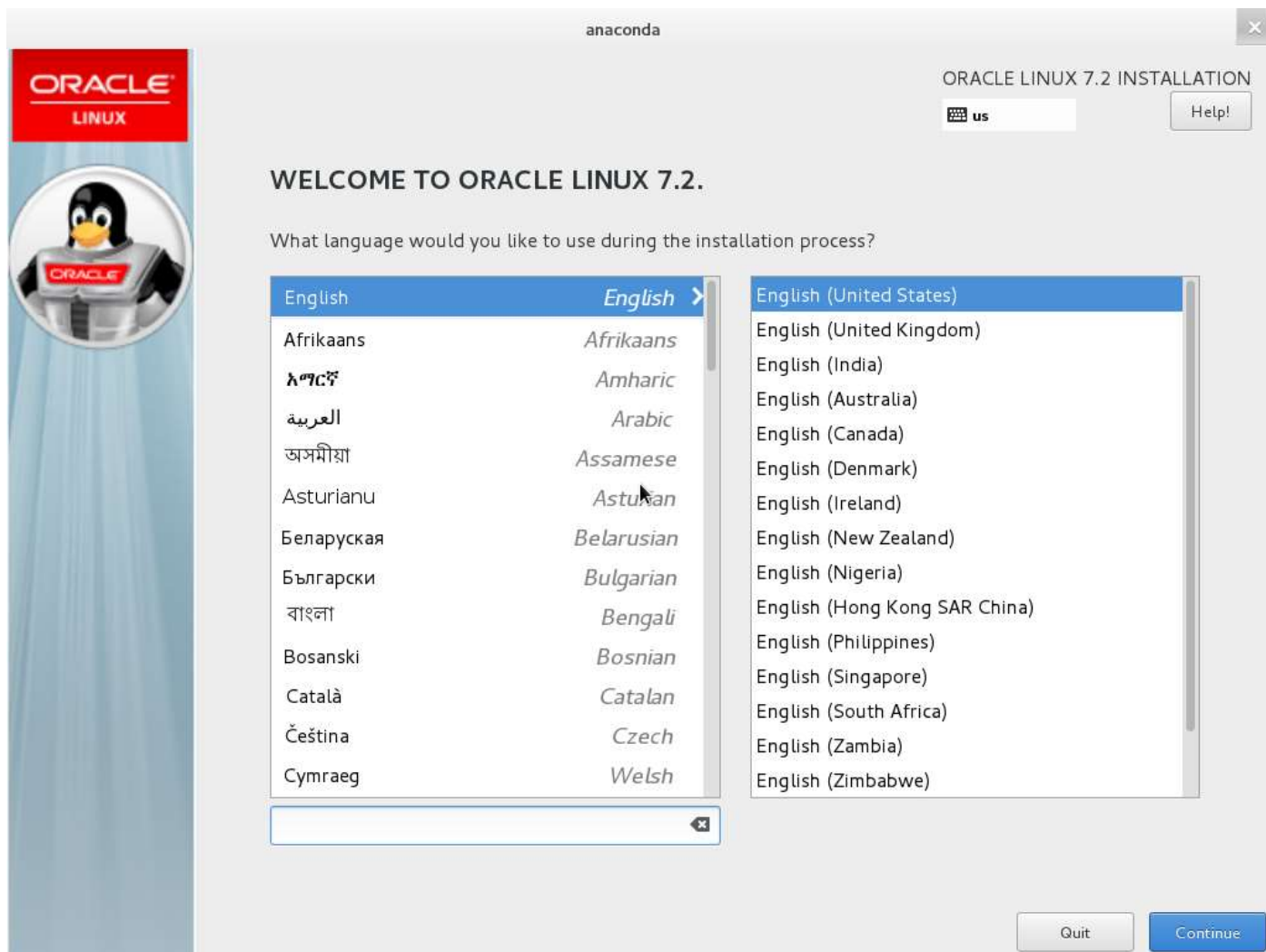
After a short wait time...



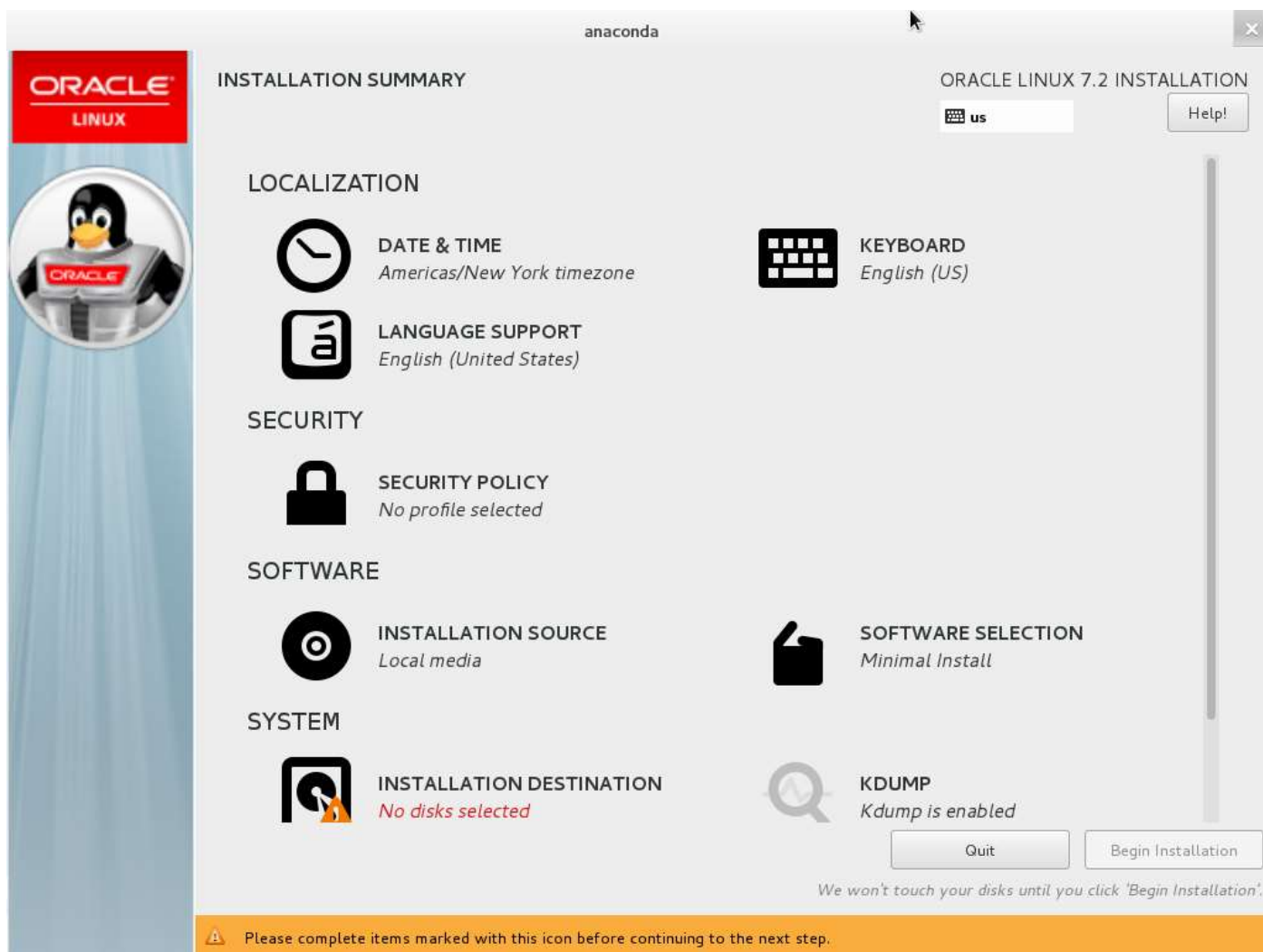
## 1.2 Type I to start the Installation ...

### 1.2.1 Choose the language

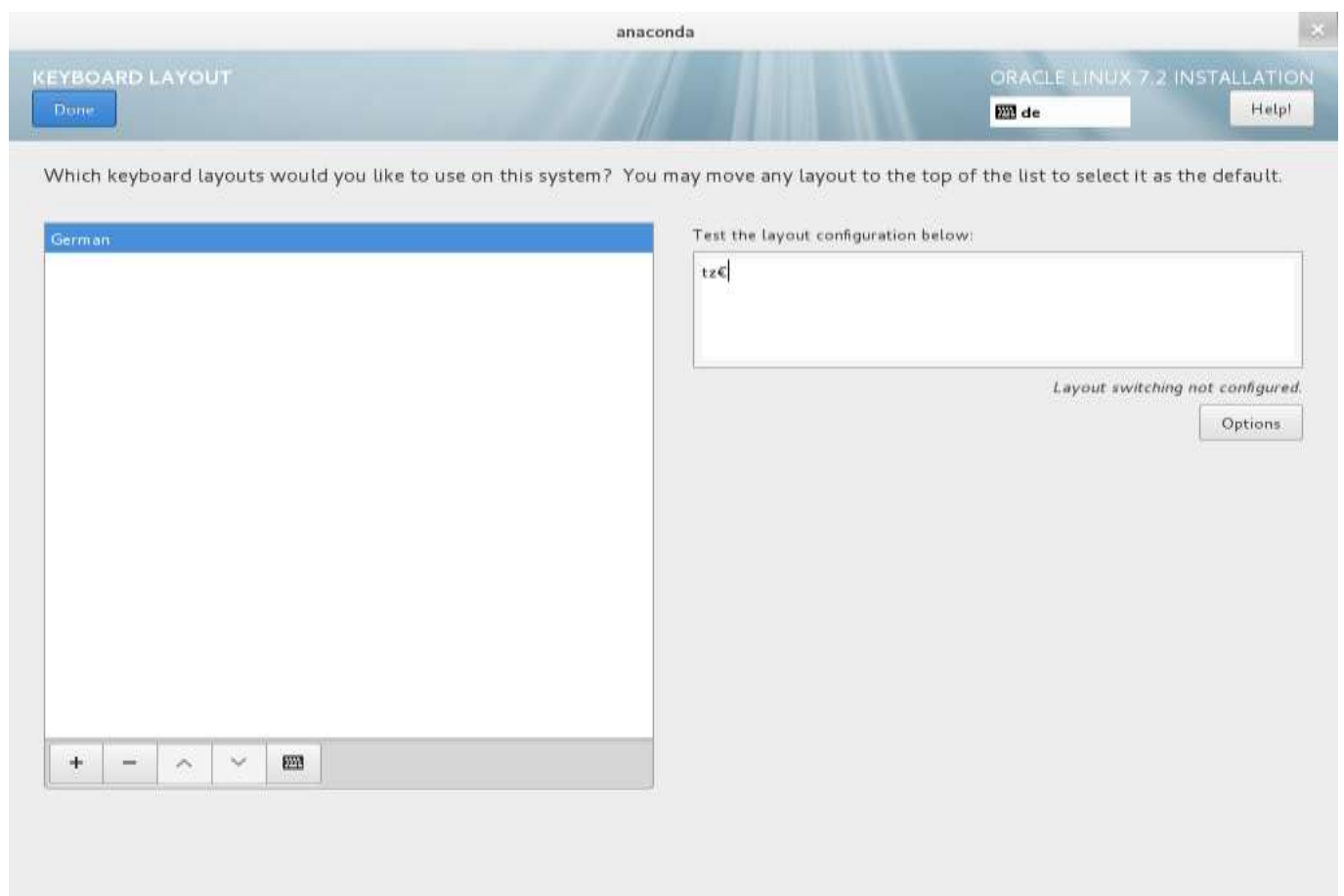
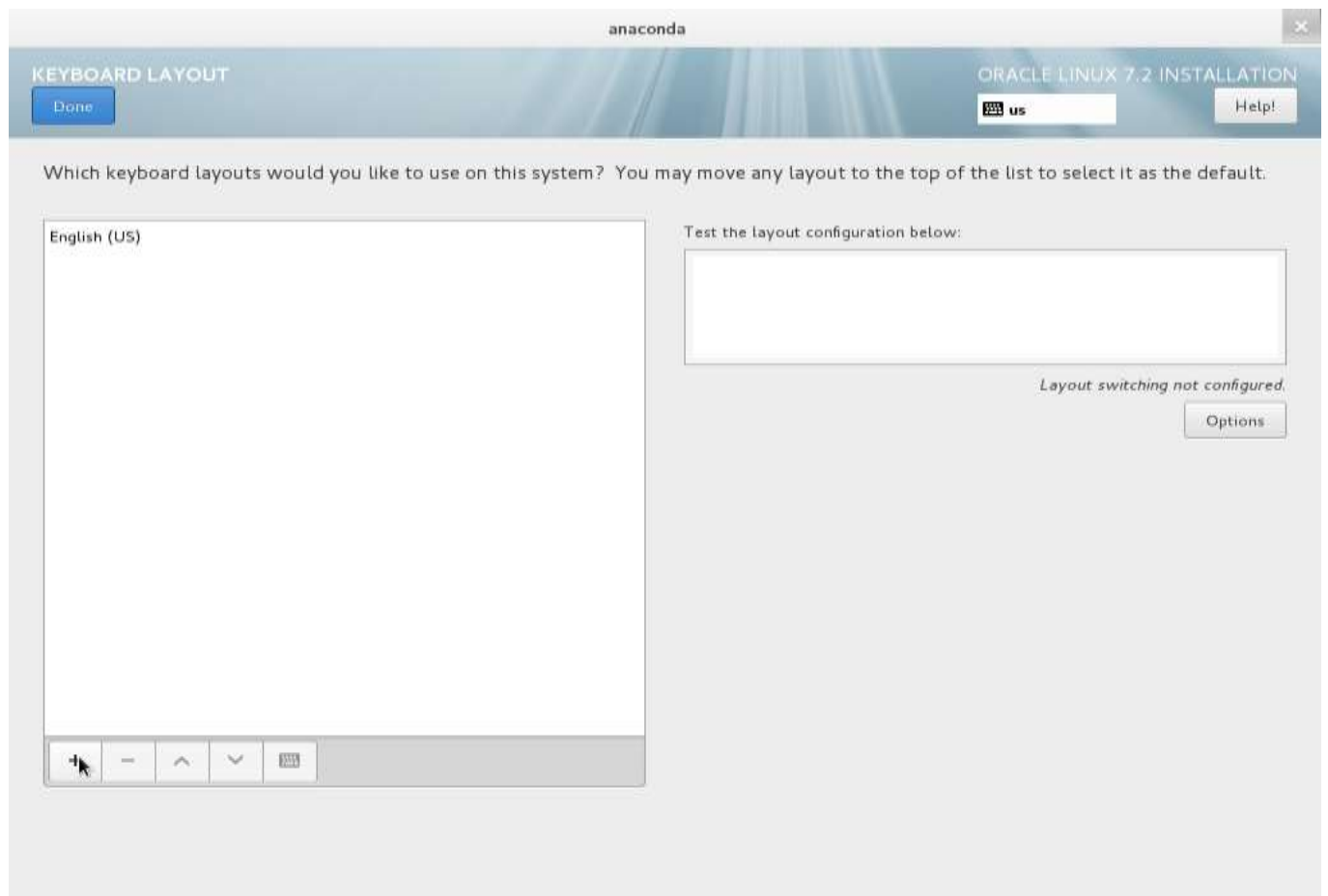
It is recommended to choose English.



## 1.3 Main Menu



### 1.3.1 Keyboard



## 1.3.2 Date & Time

anaconda

DATE & TIME

Done

ORACLE LINUX 7.2 INSTALLATION

de

Help!

Region: Europe

City: Berlin

Network Time

OFF

↑

↑

↑

14:14

PM

↓

↓

↓

☒ 24-hour

☐ AM/PM

04

15

2016

### 1.3.3 Software Selection

anaconda

SOFTWARE SELECTION

Done

ORACLE LINUX 7.2 INSTALLATION

de

Help!

Base Environment

☐ Minimal Install  
Basic functionality.

☐ Infrastructure Server  
Server for operating network infrastructure services.

☐ File and Print Server  
File, print, and storage server for enterprises.

☐ Basic Web Server  
Server for serving static and dynamic internet content.

☐ Virtualization Host  
Minimal virtualization host.

☒ Server with GUI  
Server for operating network infrastructure services, with a GUI.

Add-Ons for Selected Environment

☐ Backup Server  
Software to centralize your infrastructure's backups.

☐ DNS Name Server  
This package group allows you to run a DNS name server (BIND) on the system.

☐ E-mail Server  
Allows the system to act as a SMTP and/or IMAP e-mail server.

☐ FTP Server  
Allows the system to act as an FTP server.

☐ File and Storage Server  
CIFS, SMB, NFS, iSCSI, iSER, and iSNS network storage server.

☐ Hardware Monitoring Utilities  
A set of tools to monitor server hardware.

☐ Identity Management Server  
Centralized management of users, servers and authentication policies.

☐ Infiniband Support  
Software designed for supporting clustering and grid connectivity using RDMA-based InfiniBand and iWARP fabrics.

☐ Java Platform  
Java support for the Oracle Linux Server and Desktop Platforms.

☐ KDE  
The KDE Plasma Workspaces, a highly-configurable graphical user interface which includes a panel, desktop, system icons and desktop widgets, and many powerful KDE applications.

☐ Large Systems Performance  
Performance support tools for large systems.

☐ Load Balancer

anaconda

SOFTWARE SELECTION

Done

ORACLE LINUX 7.2 INSTALLATION

de

Help!

Base Environment

☐ Minimal Install  
Basic functionality.

☐ Infrastructure Server  
Server for operating network infrastructure services.

☐ File and Print Server  
File, print, and storage server for enterprises.

☐ Basic Web Server  
Server for serving static and dynamic internet content.

☐ Virtualization Host  
Minimal virtualization host.

☒ Server with GUI  
Server for operating network infrastructure services, with a GUI.

Add-Ons for Selected Environment

☐ Backup Server  
Software to centralize your infrastructure's backups.

☒ DNS Name Server  
This package group allows you to run a DNS name server (BIND) on the system.

☐ E-mail Server  
Allows the system to act as a SMTP and/or IMAP e-mail server.

☐ FTP Server  
Allows the system to act as an FTP server.

☐ File and Storage Server  
CIFS, SMB, NFS, iSCSI, iSER, and iSNS network storage server.

☒ Hardware Monitoring Utilities  
A set of tools to monitor server hardware.

☐ Identity Management Server  
Centralized management of users, servers and authentication policies.

☐ Infiniband Support  
Software designed for supporting clustering and grid connectivity using RDMA-based InfiniBand and iWARP fabrics.

☐ Java Platform  
Java support for the Oracle Linux Server and Desktop Platforms.

☐ KDE  
The KDE Plasma Workspaces, a highly-configurable graphical user interface which includes a panel, desktop, system icons and desktop widgets, and many powerful KDE applications.

☒ Large Systems Performance  
Performance support tools for large systems.

☐ Load Balancer



## SOFTWARE SELECTION

Done

ORACLE LINUX 7.2 INSTALLATION

de

Help!

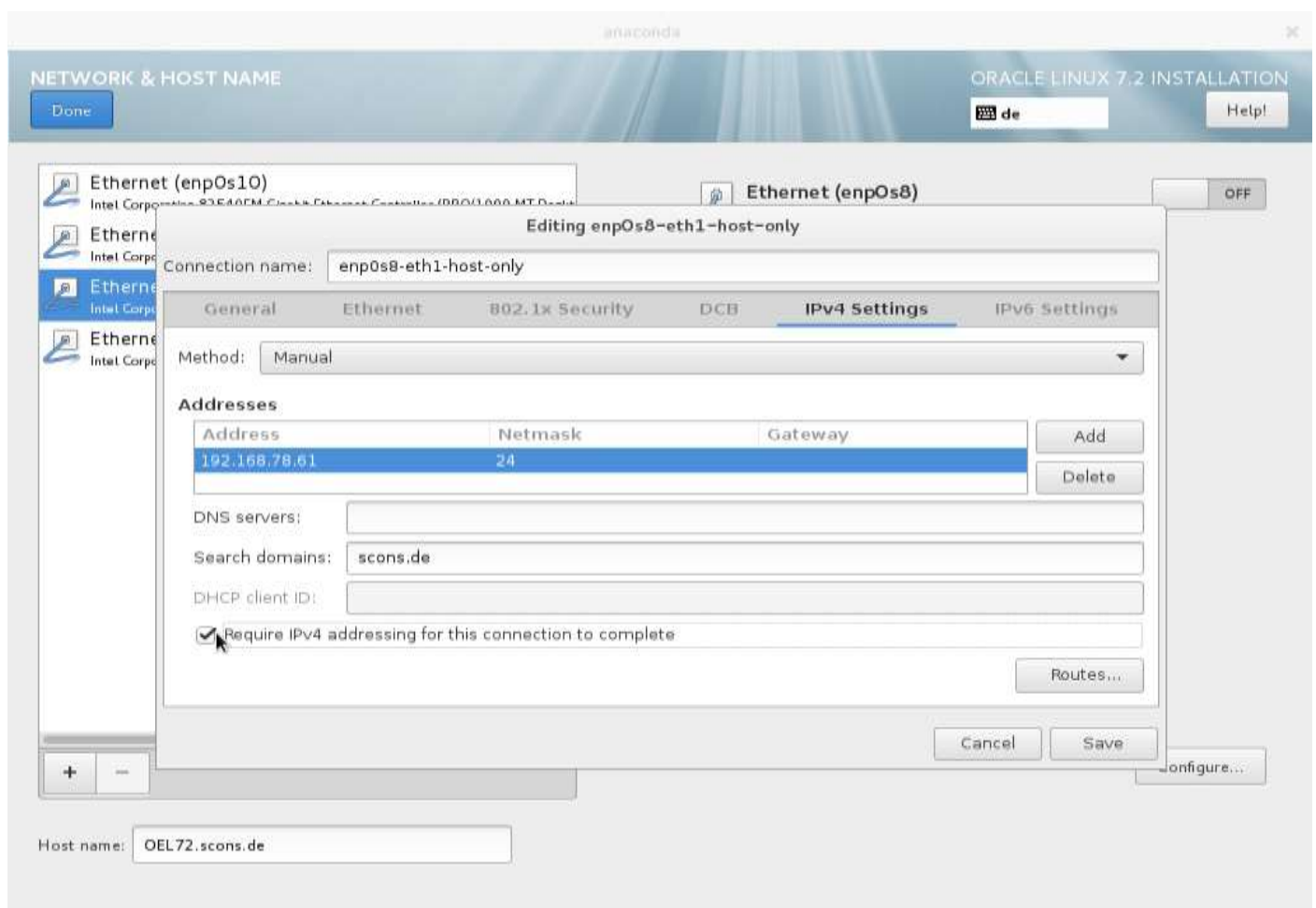
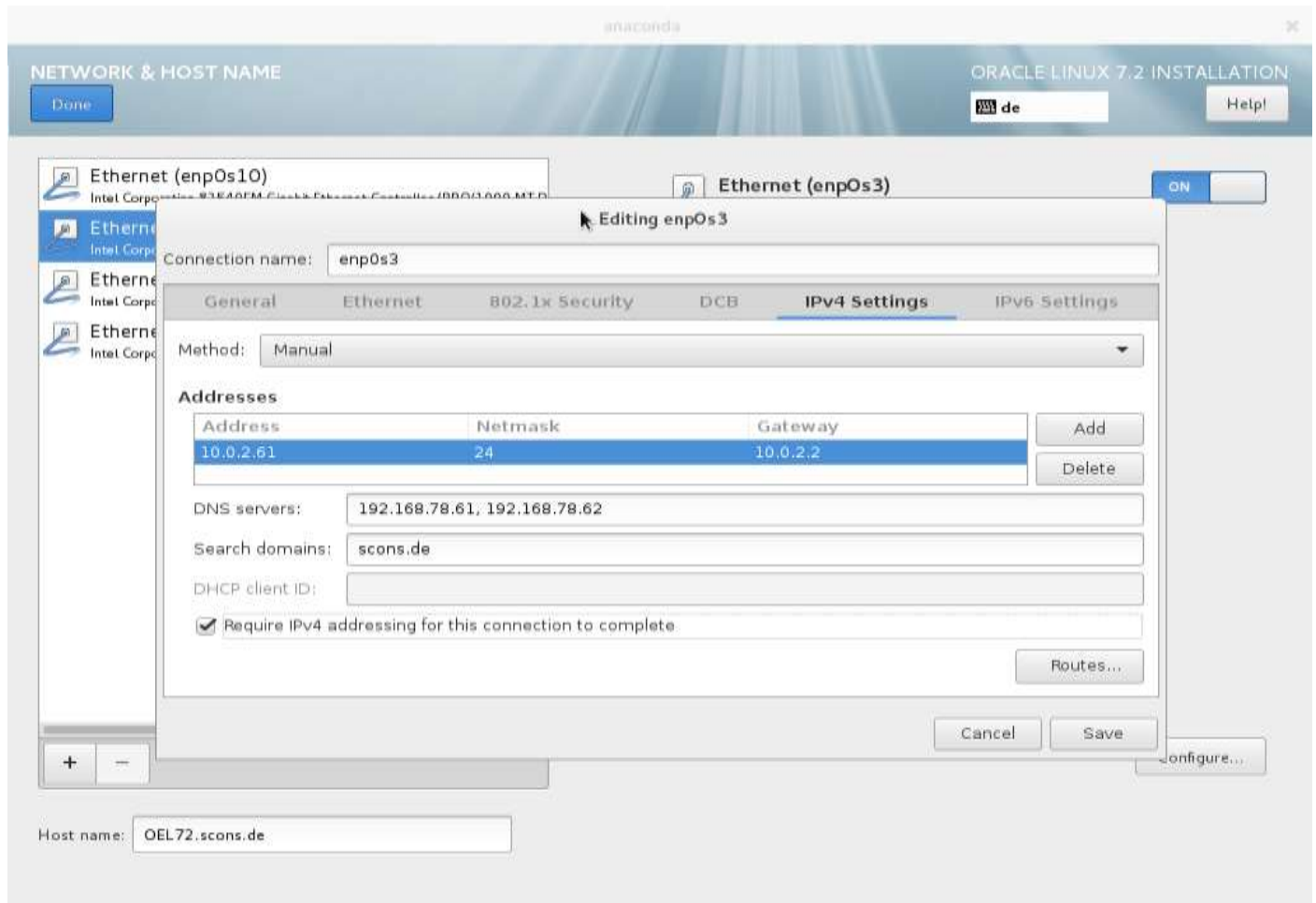
## Base Environment

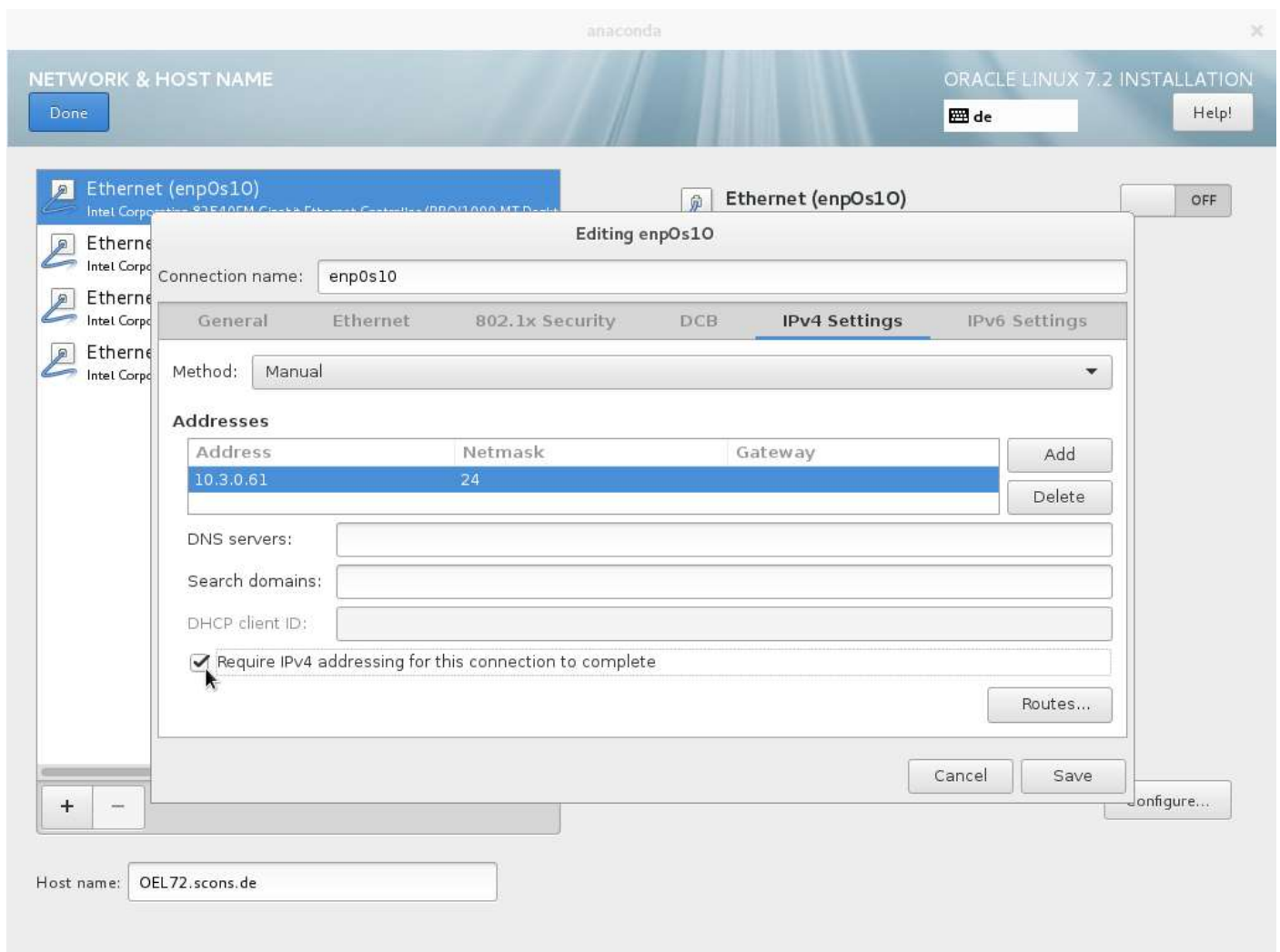
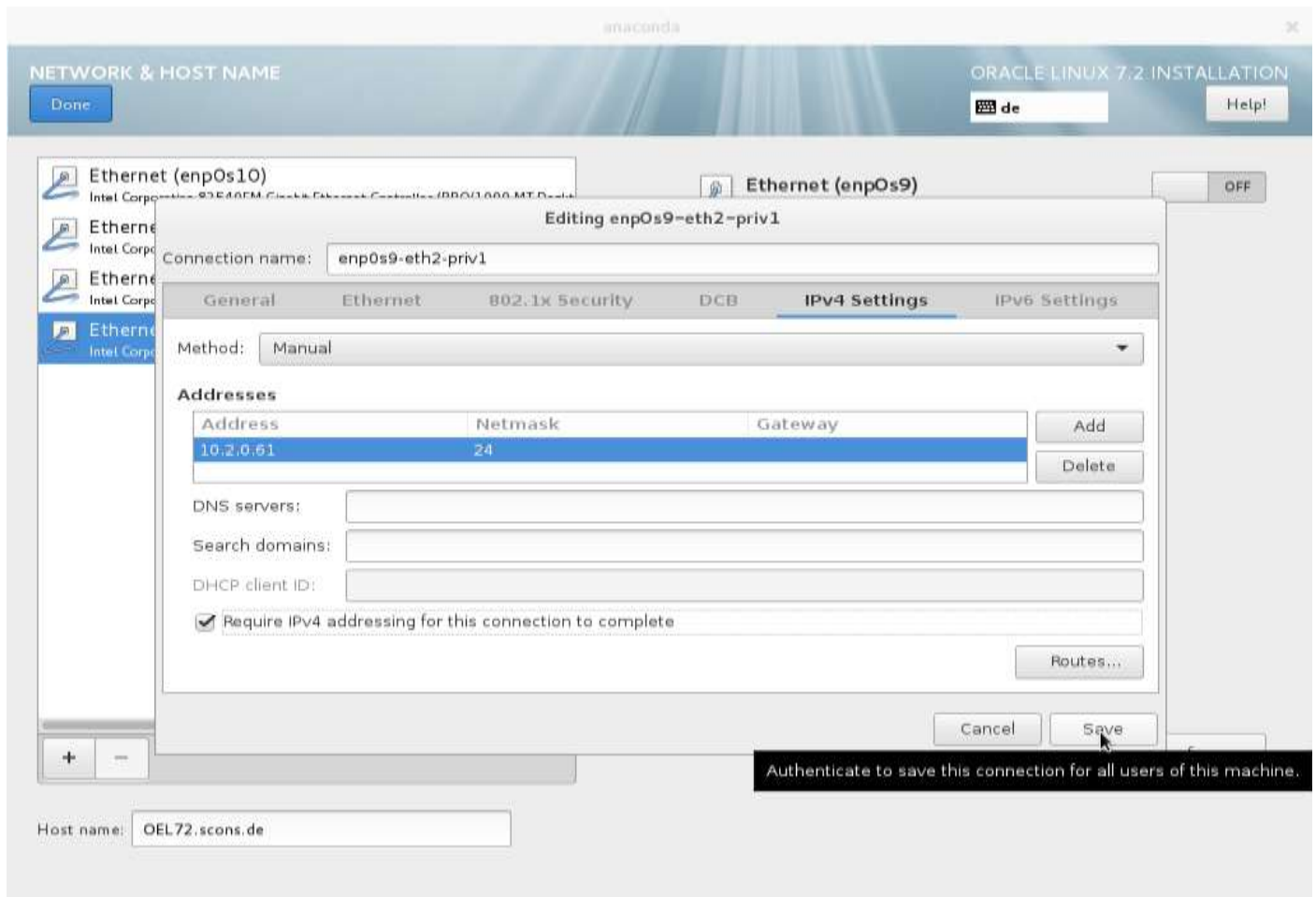
- ☐ **Minimal Install**  
Basic functionality.
- ☐ **Infrastructure Server**  
Server for operating network infrastructure services.
- ☐ **File and Print Server**  
File, print, and storage server for enterprises.
- ☐ **Basic Web Server**  
Server for serving static and dynamic internet content.
- ☐ **Virtualization Host**  
Minimal virtualization host.
- ☒ **Server with GUI**  
Server for operating network infrastructure services, with a GUI.

## Add-Ons for Selected Environment

- ☒ **Network File System Client**  
Enables the system to attach to network storage.
- ☒ **Performance Tools**  
Tools for diagnosing system and application-level performance problems.
- ☐ **PostgreSQL Database Server**  
The PostgreSQL SQL database server, and associated packages.
- ☐ **Print Server**  
Allows the system to act as a print server.
- ☐ **Remote Management for Linux**  
Remote management interface for Oracle Linux, including OpenLMl and SNMP.
- ☐ **Virtualization Client**  
Clients for installing and managing virtualization instances.
- ☐ **Virtualization Hypervisor**  
Smallest possible virtualization host installation.
- ☐ **Virtualization Tools**  
Tools for offline virtual image management.
- ☒ **Compatibility Libraries**  
Compatibility libraries for applications built on previous versions of Oracle Linux.
- ☒ **Development Tools**  
A basic development environment.
- ☐ **Security Tools**  
Security tools for integrity and trust verification.
- ☐ **Smart Card Support**  
Support for using smart card authentication.

### 1.3.4 Network & Hostname





anaconda

NETWORK & HOST NAME

ORACLE LINUX 7.2 INSTALLATION

Done

de

Help!

Ethernet (enp0s10)  
Intel Corporation 82540EM Gigabit Ethernet Controller (PRO/1000 MT Deskb

Ethernet (enp0s3)  
Intel Corporation 82540EM Gigabit Ethernet Controller (PRO/1000 MT Deskb

Ethernet (enp0s8)  
Intel Corporation 82540EM Gigabit Ethernet Controller (PRO/1000 MT Deskb

Ethernet (enp0s9)  
Intel Corporation 82540EM Gigabit Ethernet Controller (PRO/1000 MT Deskb

Ethernet (enp0s3)  
Connected

Hardware Address 08:00:27:DD:5A:87

Speed 1000 Mb/s

IP Address 10.0.2.61

Subnet Mask 255.255.255.0

Default Route 10.0.2.2

DNS 192.168.78.61 192.168.78.62

ON

Configure...

Host name: OEL72.scons.de

anaconda

DATE & TIME

ORACLE LINUX 7.2 INSTALLATION

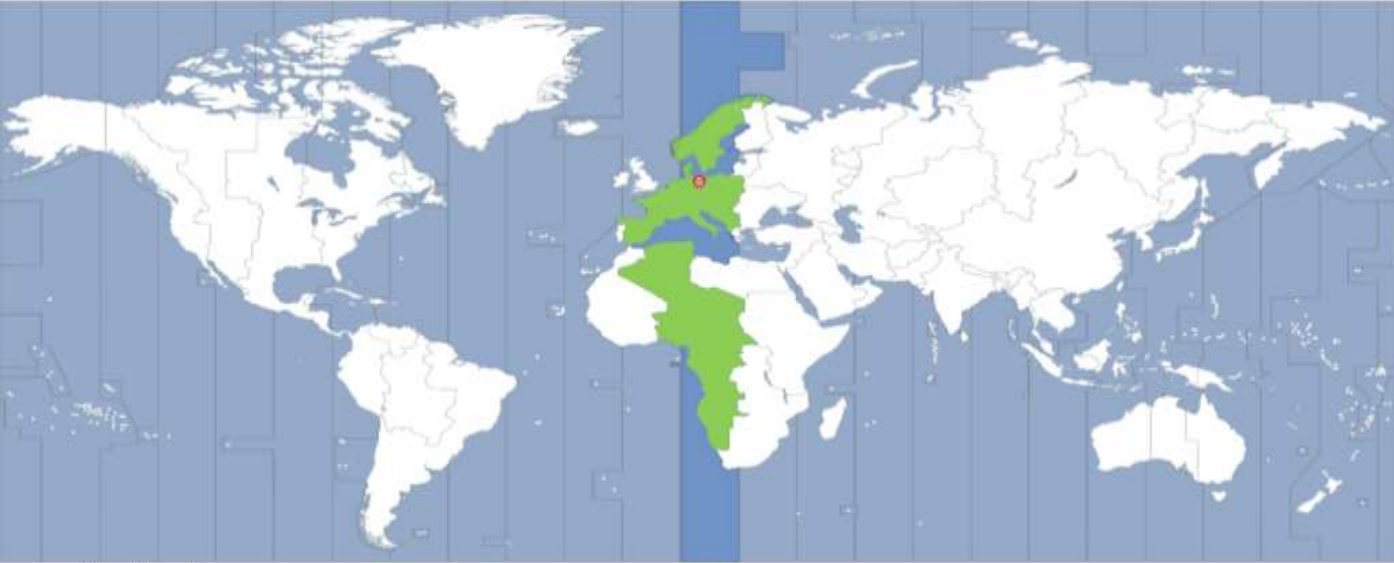
Done

de

Help!

Region: Europe City: Berlin

Network Time ON




14:25 PM

24-hour

AM/PM

04 / 15 / 2016

 You have no working NTP server configured

## 1.3.5 Installation Destination

anaconda

ORACLE LINUX 7.2 INSTALLATION

de

Help!

INSTALLATION DESTINATION

Done

Device Selection

Select the device(s) you'd like to install to. They will be left untouched until you click on the main menu's "Begin Installation" button.

Local Standard Disks

30 GiB

60 GiB

ATA VBOX HARDDISK

ATA VBOX HARDDISK

sda / 30 GiB free

sdb / 60 GiB free

Disks left unselected here will not be touched.

Specialized & Network Disks

Add a disk...

Disks left unselected here will not be touched.

Other Storage Options

Partitioning

☐ Automatically configure partitioning.

☒ I will configure partitioning.

☐ I would like to make additional space available.

Encryption

☐ Encrypt my data. You'll set a passphrase next.

[Full disk summary and boot loader...](#)

2 disks selected; 90 GiB capacity; 90 GiB free

anaconda

ORACLE LINUX 7.2 INSTALLATION

de

Help!

MANUAL PARTITIONING

Done

▼ New Oracle Linux 7.2 Installation

You haven't created any mount points for your Oracle Linux 7.2 installation yet. You can:

- [Click here to create them automatically.](#)
- Create new mount points by clicking the '+' button.

New mount points will use the following partitioning scheme:

Standard Partition

+

−

↺

AVAILABLE SPACE

90 GiB

TOTAL SPACE

90 GiB

[2 storage devices selected](#)

When you create mount points for your Oracle Linux 7.2 installation, you'll be able to view their details here.

Reset All



anaconda

MANUAL PARTITIONING

ORACLE LINUX 7.2 INSTALLATION

Done

de

Help!

New Oracle Linux 7.2 Installation

DATA

/u01

sdb1

60 GiB

SYSTEM

/boot

sda1

512 MiB

/var

sda3

5120 MiB

/

sda2

20.5 GiB

swap

sda5

4096 MiB

+ - ↺

AVAILABLE SPACE

2306.5 KiB

TOTAL SPACE

90 GiB

[2 storage devices selected](#)

sda5

Mount Point:

Device(s):

Desired Capacity:

4096 MiB

Modify...

Device Type:

Standard Partition

Encrypt

File System:

swap

Reformat

Label:

SWAP

Name:

sda5

Update Settings

Note: The settings you make on this screen will not be applied until you click on the main menu's 'Begin Installation' button.

Reset All

anaconda

MANUAL PARTITIONING

ORACLE LINUX 7.2 INSTALLATION

Done

de

Help!

New Oracle Linux 7.2 Installation

DATA

/u01

sdb1

60 GiB

SYSTEM

/boot

sda1

512 MiB

/var

sda3

5120 MiB

/

sda2

20.5 GiB

swap

sda5

4096 MiB

+ - ↺

AVAILABLE SPACE

2306.5 KiB

TOTAL SPACE

90 GiB

[2 storage devices selected](#)

sda5

Mount Point:

Device(s):

SUMMARY OF CHANGES

Your customizations will result in the following changes taking effect after you return to the main menu and begin installation:

Order	Action	Type	Device Name	Mount point
1	Destroy Format	Unknown	sdb	
2	Destroy Format	Unknown	sda	
3	Create Format	partition table (MSDOS)	sdb	
4	Create Device	partition	sdb1	
5	Create Format	xfs	sdb1	/u01
6	Create Format	partition table (MSDOS)	sda	
7	Create Device	partition	sda1	
8	Create Format	xfs	sda1	/boot
9	Create Device	partition	sda2	
10	Create Device	partition	sda3	
11	Create Format	xfs	sda3	/var

Cancel & Return to Custom Partitioning

Accept Changes

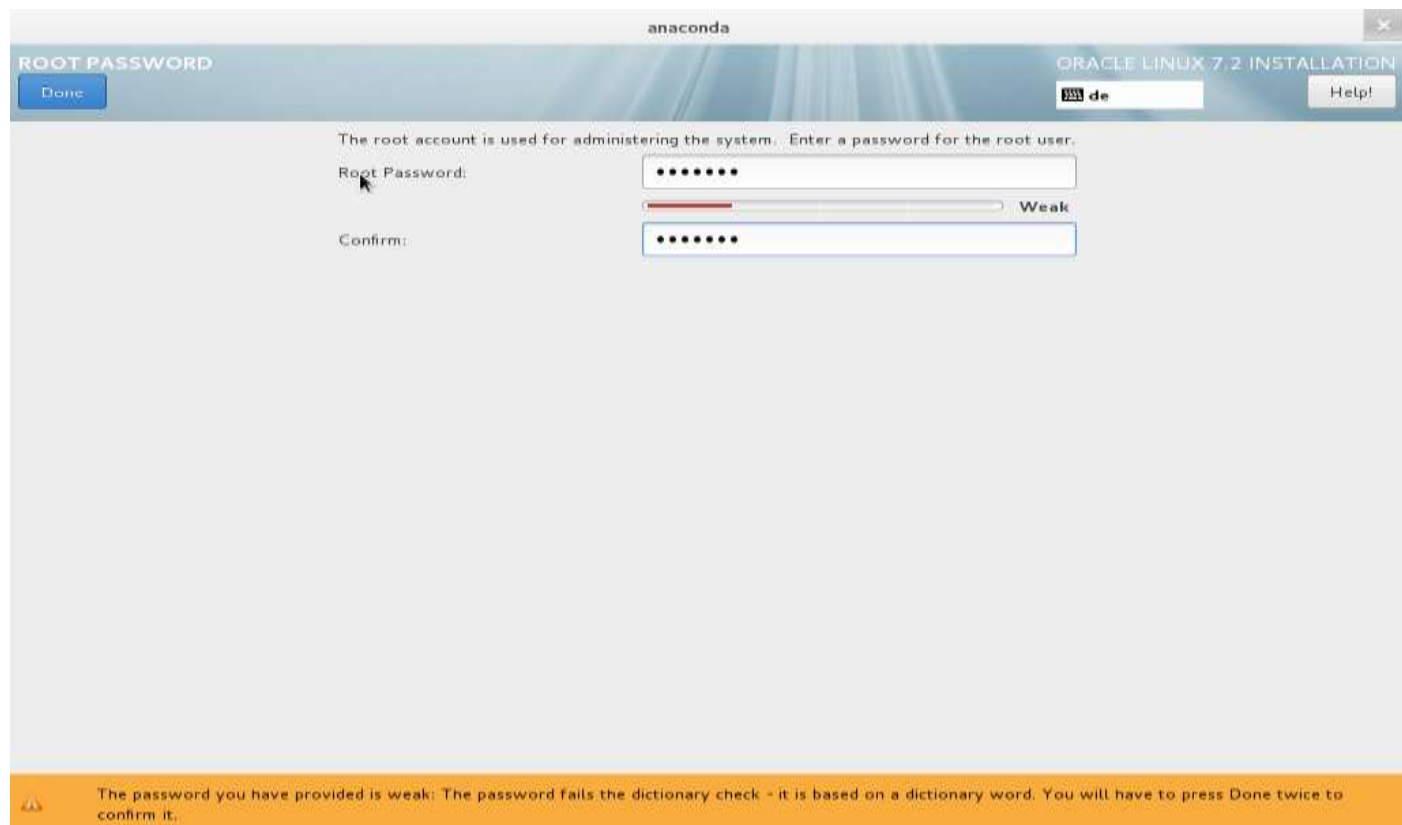
Update Settings

Note: The settings you make on this screen will not be applied until you click on the main menu's 'Begin Installation' button.

Reset All

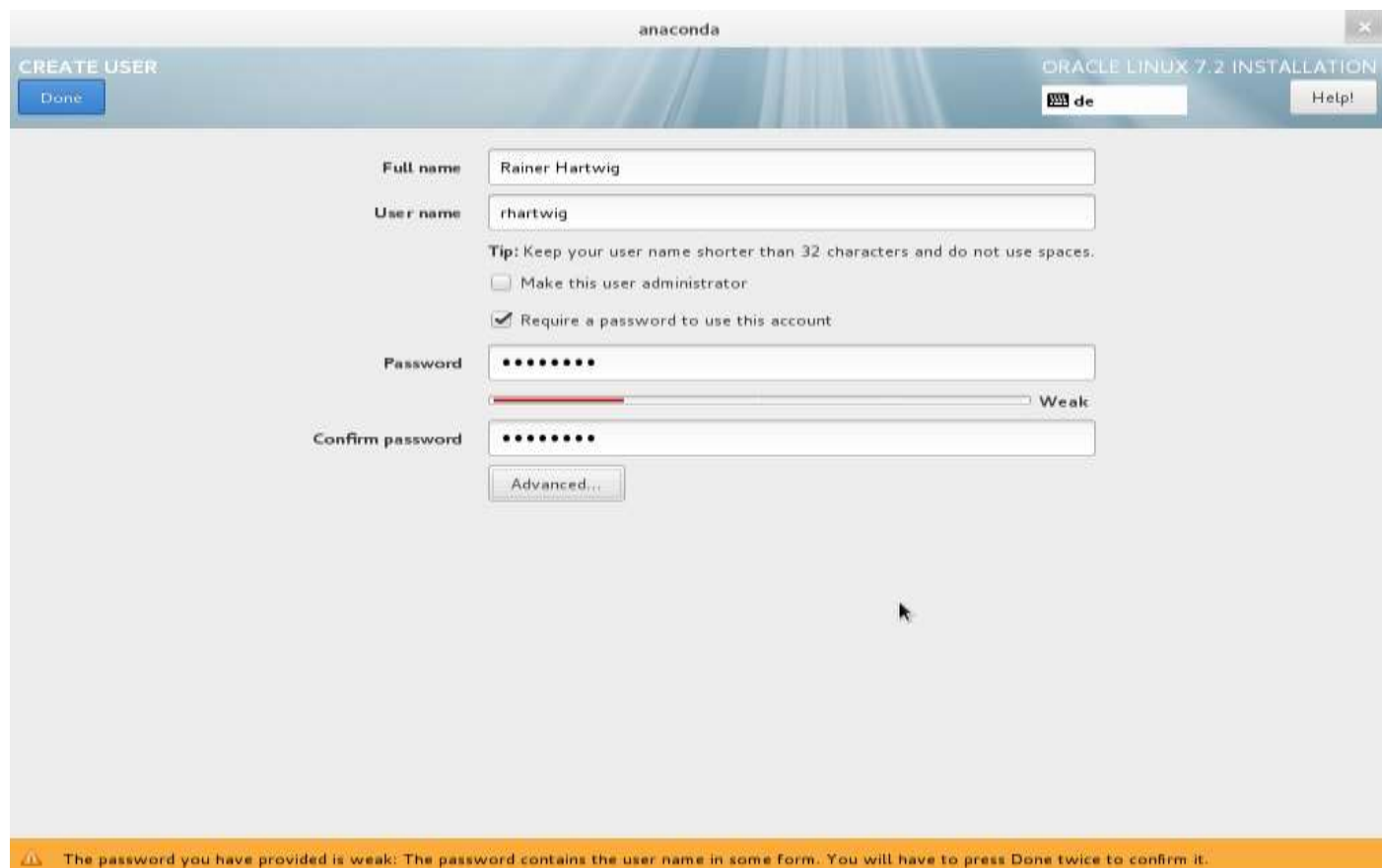
## 1.3.6 During Installation

### 1.3.6.1 Set ROOT Password



The screenshot shows the 'anaconda' window titled 'ORACLE LINUX 7.2 INSTALLATION'. The main heading is 'ROOT PASSWORD'. There is a 'Done' button on the left and a 'Help!' button on the right. The text reads: 'The root account is used for administering the system. Enter a password for the root user.' Below this, there are two password input fields. The first is labeled 'Root Password:' and the second is labeled 'Confirm:'. Both fields contain masked characters (dots). A strength indicator bar is shown between the fields, with the word 'Weak' at the end. At the bottom, an orange warning banner states: 'The password you have provided is weak: The password fails the dictionary check - it is based on a dictionary word. You will have to press Done twice to confirm it.'

### 1.3.6.2 Create User

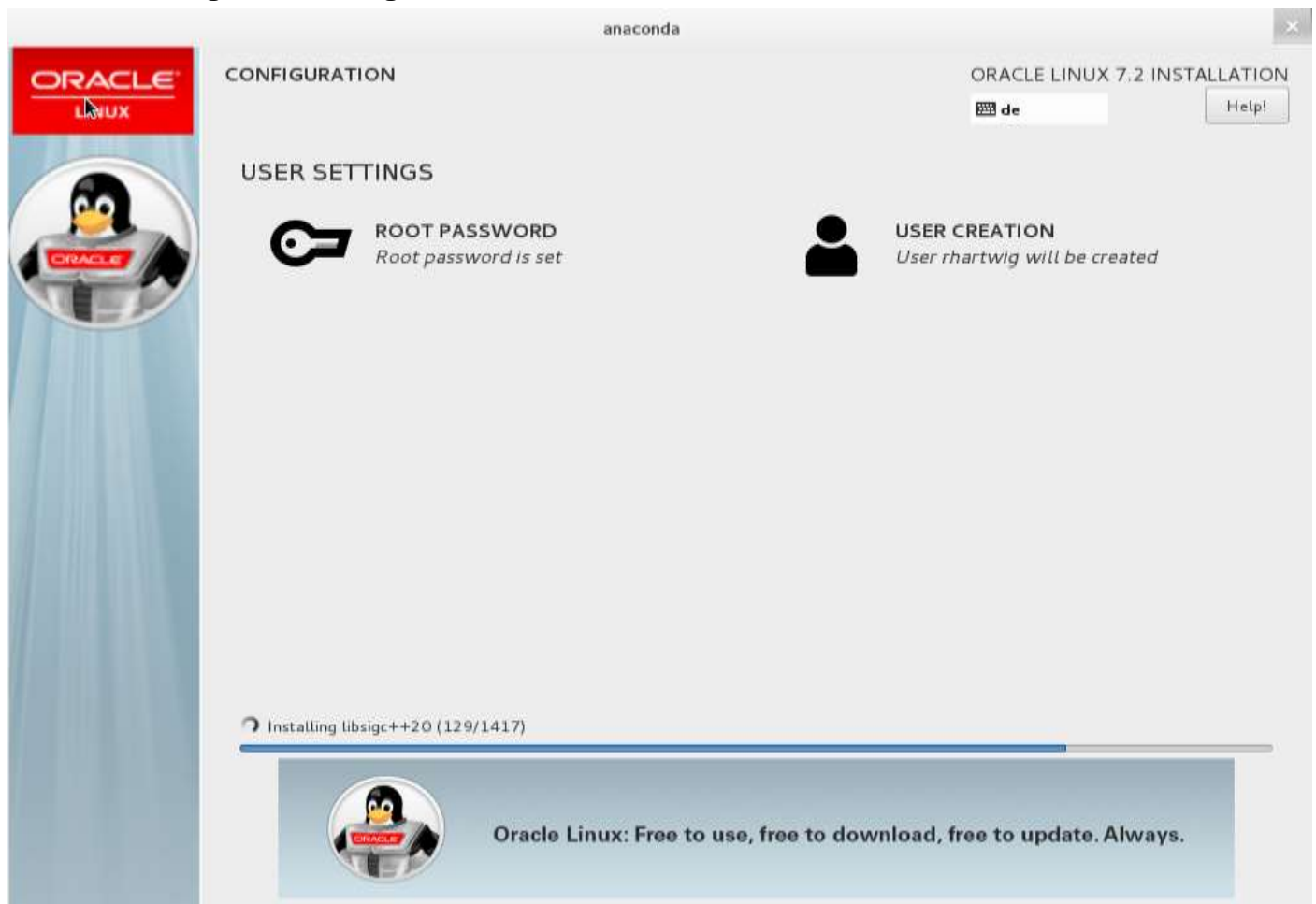


The screenshot shows the 'anaconda' window titled 'ORACLE LINUX 7.2 INSTALLATION'. The main heading is 'CREATE USER'. There is a 'Done' button on the left and a 'Help!' button on the right. The form contains the following fields and options:

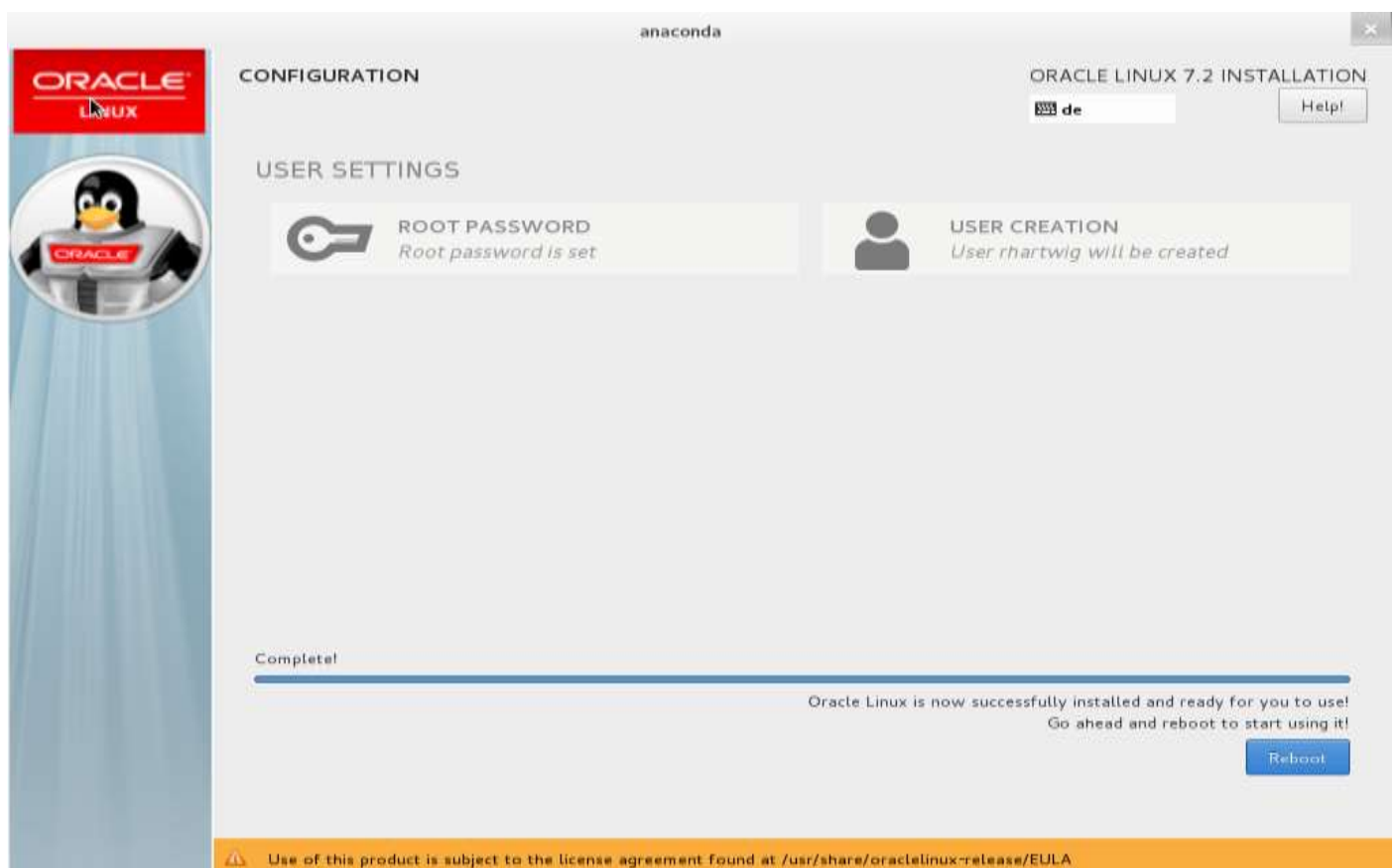
- Full name:** Rainer Hartwig
- User name:** rhartwig
- Tip:** Keep your user name shorter than 32 characters and do not use spaces.
- ☐ Make this user administrator
- ☒ Require a password to use this account
- Password:** [masked] with a strength indicator showing 'Weak'.
- Confirm password:** [masked]
- Advanced...** button

At the bottom, an orange warning banner states: 'The password you have provided is weak: The password contains the user name in some form. You will have to press Done twice to confirm it.'

### 1.3.6.3 Waiting on finishing installation



### 1.3.7 Reboot when installation is finished





### 1.3.8 Accept the Licence

```
Oracle Linux Server (3.10.0-327.el7.x86_64 with Linux) 7.2
Oracle Linux Server (3.8.13-98.7.1.el7uek.x86_64 with Unbreakable Enterprise Linux) 7.2
Oracle Linux Server (0-rescue-d2c94fc7d473486cbdfed7686be8965e with Linux) 7.2
```

```
Use the ↑ and ↓ keys to change the selection.
Press 'e' to edit the selected item, or 'c' for a command prompt.
The selected entry will be started automatically in 3s.
```

```
1) [?] License information
   (License not accepted)
Please make your choice from [ '1' to enter the License information spoke | 'q'
to quit |
'c' to continue | 'r' to refresh]: 1
```

```
=====
License information
```

```
1) Read the License Agreement
```

```
[ ] 2) I accept the license agreement.
```

```
Please make your choice from above [ 'q' to quit | 'c' to continue |
'r' to refresh]: 2
```

```
=====
License information
```

```
1) Read the License Agreement
```

```
[x] 2) I accept the license agreement.
```

```
Please make your choice from above [ 'q' to quit | 'c' to continue |
'r' to refresh]: _
```

```
ong as Oracle offers spare parts or customer support for that product model or v
ersion.
```

```
Last updated 29 September 2015
```

```
=====
License information
```

```
1) Read the License Agreement
```

```
[ ] 2) I accept the license agreement.
```

```
Please make your choice from above [ 'q' to quit | 'c' to continue |
'r' to refresh]: 2
```

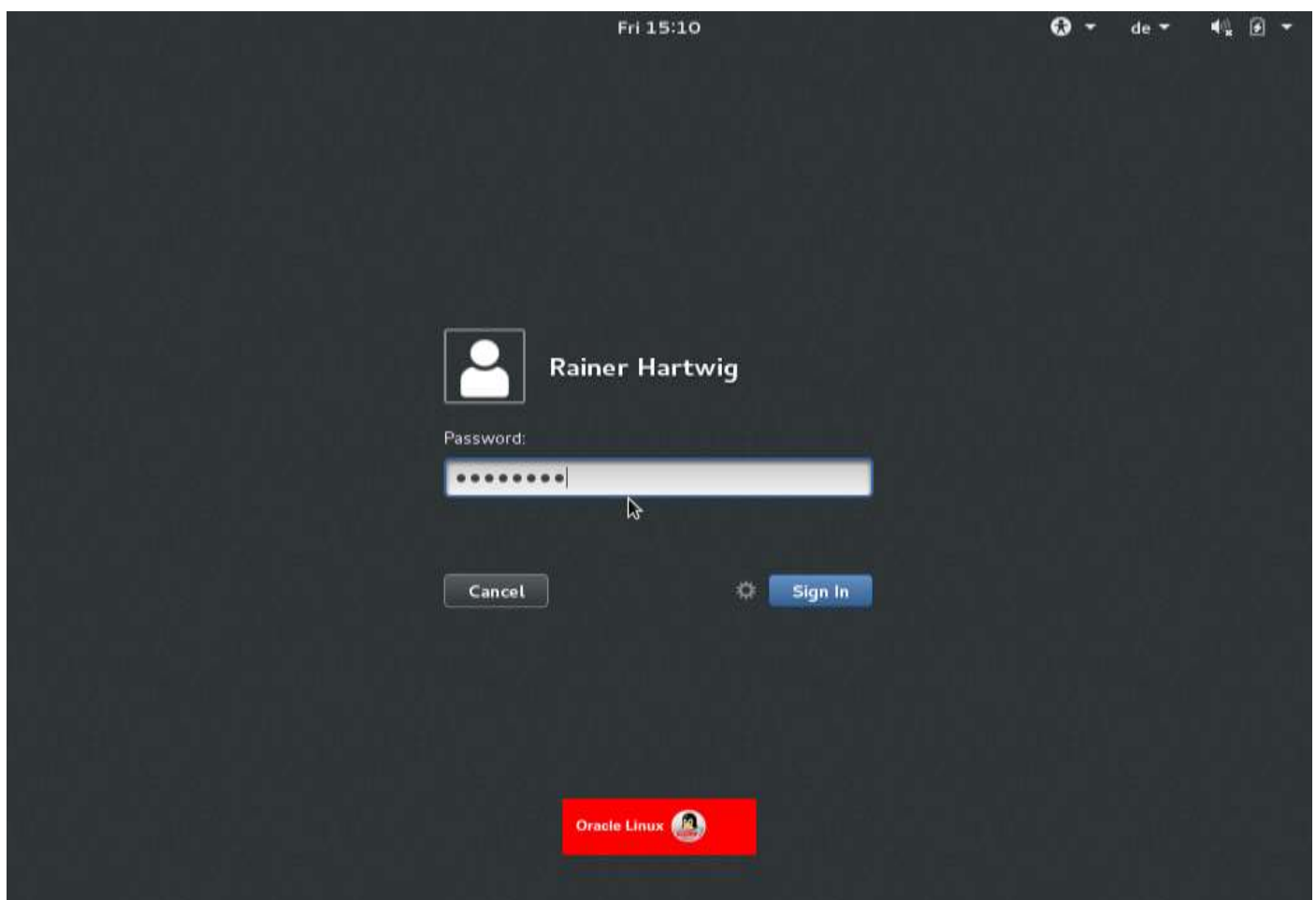
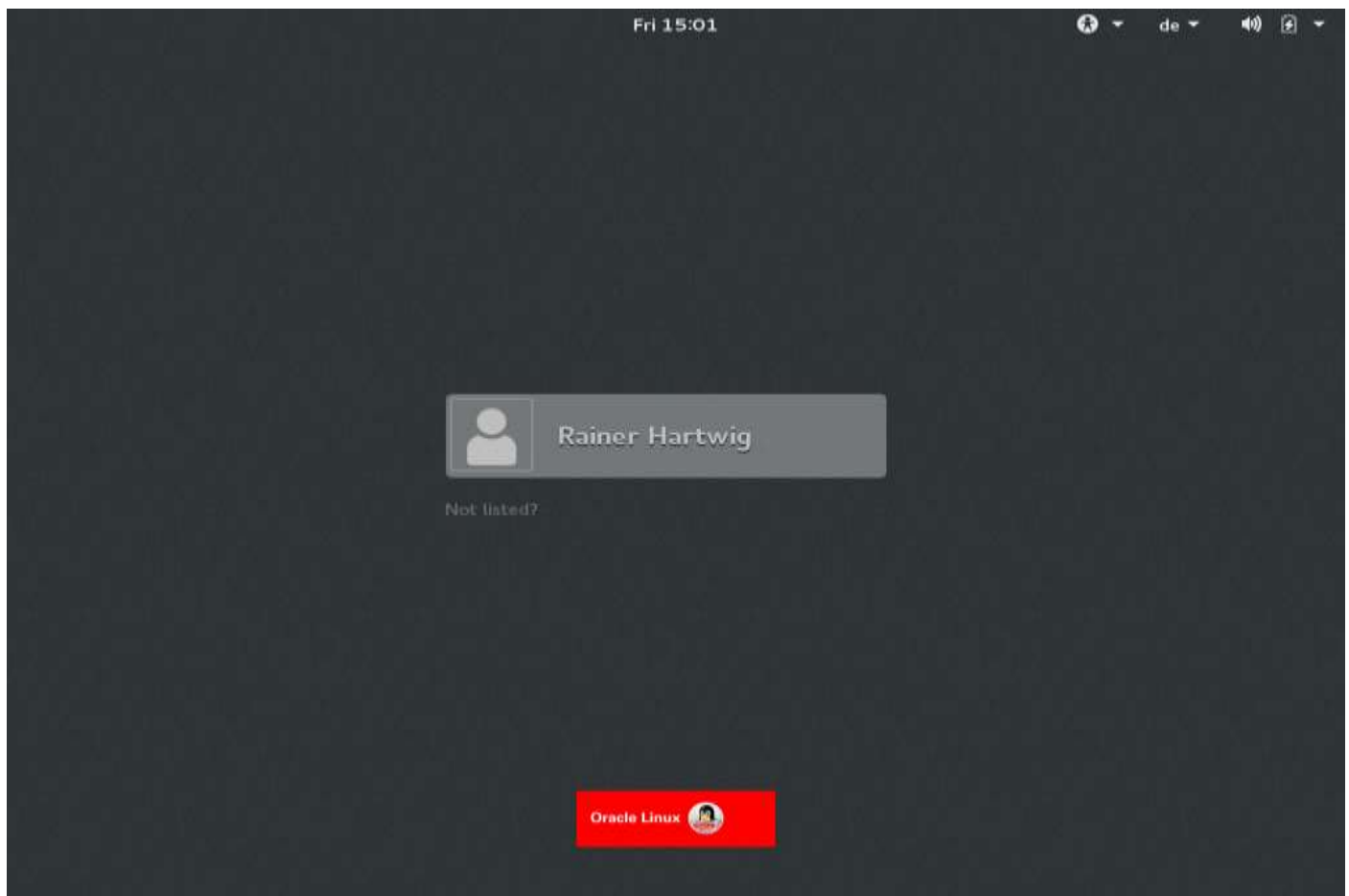
```
=====
License information
```

```
1) Read the License Agreement
```

```
[x] 2) I accept the license agreement.
```

```
Please make your choice from above [ 'q' to quit | 'c' to continue |
'r' to refresh]: _
```

### 1.3.9 First Login Approvals



Applications ▾Places ▾gnome-initial-setup ▾

de ▾Fri 15:02 🔊 🔍 ▾

Welcome

Next

欢迎！

Deutsch	Deutschland
English ✓	United States
Español	España
français	France
русский	Российская Федерация
العربية	مصر
日本語	日本
⋮	

gnome-initial-setup

1 / 4

Applications ▾Places ▾gnome-initial-setup ▾

de ▾Fri 15:02 🔊 🔍 ▾

Previous

Typing

Next

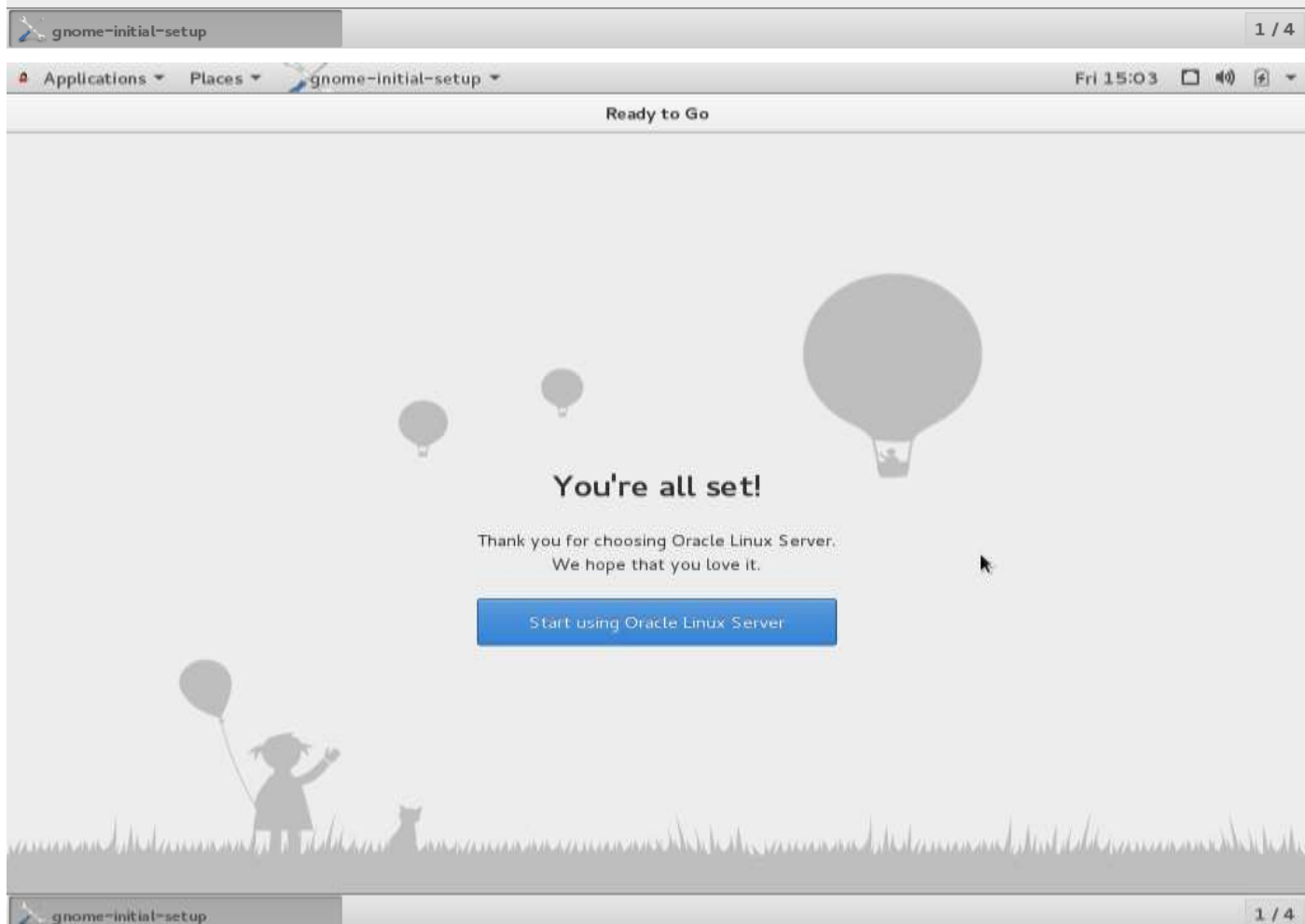
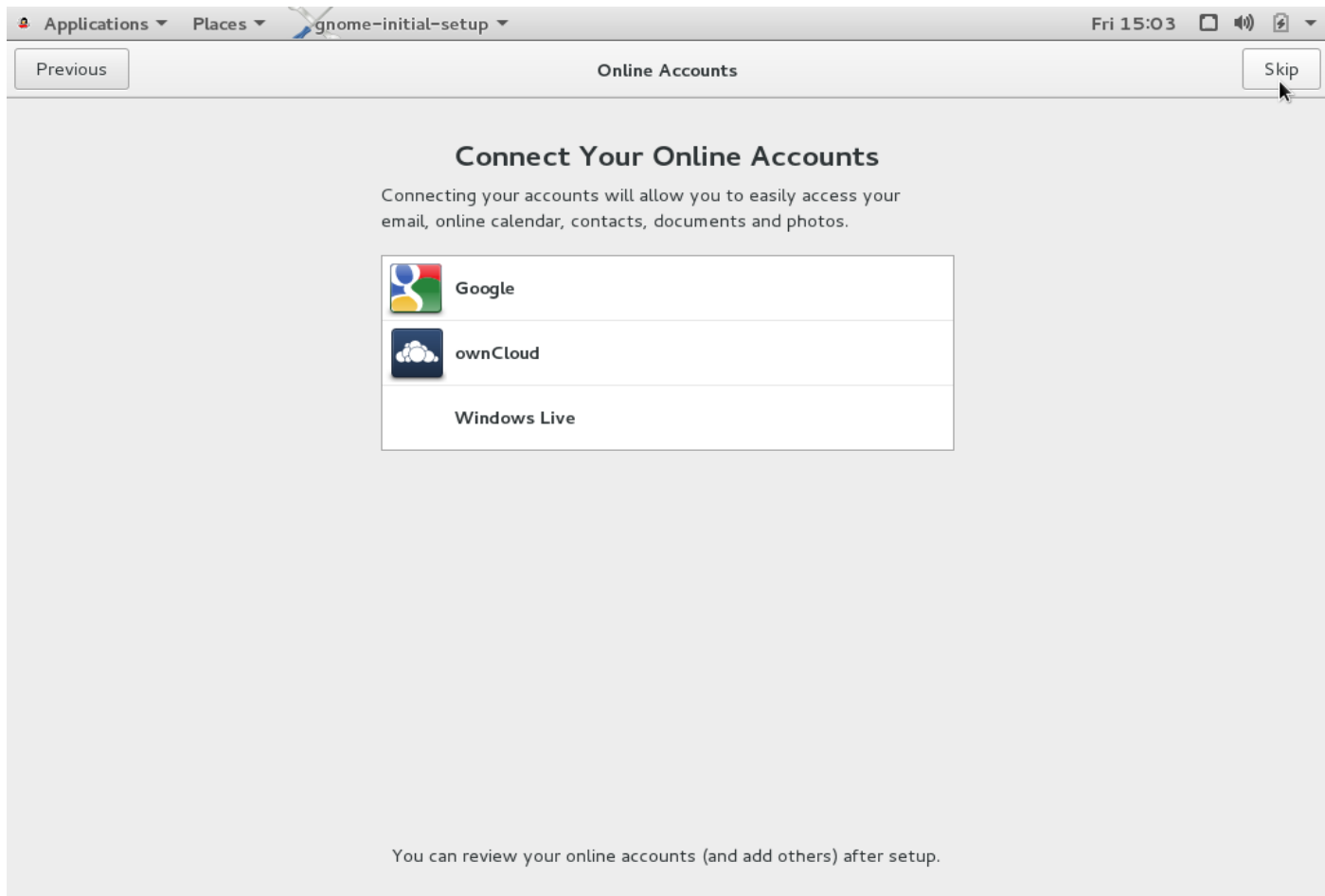
Typing

Select your keyboard layout or an input method.

Cameroon Multilingual (Dvorak)	<a href="#">Preview</a>
Cameroon Multilingual (qwerty)	<a href="#">Preview</a>
English (Cameroon)	<a href="#">Preview</a>
English (Canada)	<a href="#">Preview</a>
English (Colemak)	<a href="#">Preview</a>
English (US)	<a href="#">Preview</a>
German	✓ <a href="#">Preview</a>
⋮	

gnome-initial-setup

1 / 4



## Getting Started



Use windows and workspaces



Switch tasks



Respond to messages

## Common Tasks

- |  |  |                                       |
|--|--|---------------------------------------|
| <a href="#">Browse the web</a>             | <a href="#">Change the date, time and timezone</a> | <a href="#">Change the wallpaper</a>  |
| <a href="#">Connect to online accounts</a> | <a href="#">Respond to messages</a>                | <a href="#">Use the system search</a> |
| <a href="#">Use windows and workspaces</a> | <a href="#">Get online</a>                         | <a href="#">Switch tasks</a>          |

## GNOME Help

[About](#)

